

Retreading ↻

Rasp Blades & Spacers | Retread Accessories
Tire Appearance | Envelopes



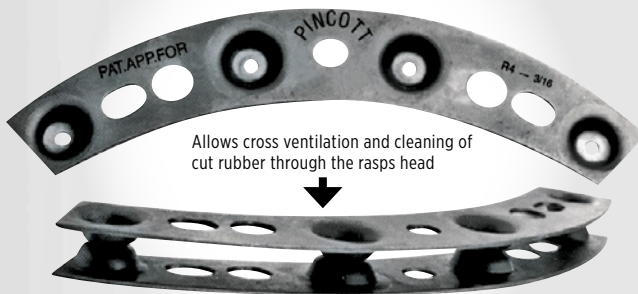
➔ Rasp Blades



Rasp Blades and Spacers

PINCOTT® STANDARD SERIES BUFFING RASP BLADES

Progressive development of blades capable of higher rates of rubber removal and the use of more powerful and higher speed machines imposed increasingly severe temperature conditions on rasp blades, giving rise to the need for effective cooling to avoid loss of temper in the blade material.



SINGLE SECTION
1/8", 5/32", 3/16"

- Lower cost per buffed tire
- **Engineered by a company with over 65 years in the retreading industry**
- Designed to fit all U.S. and European buffing machines, manufactured with multiple stampings to allow interchangeability between two or three pin hubs
- **BENEFITS INCLUDE:** reduced heat and smoke, cleaner buffer, cooler running and faster buffing
- 6 precision sizes
- Heavy duty quality steel blade
- Cross ventilation
- Special heat treatment for long life
- **INCREASES BLADE LIFE:** Keeps blades running cooler, improves buff texture and prevents premature blade breakage

ASCOT NO.	MFG. NO.	DESCRIPTION
613-00414	R4S14DL	1/4" Double
613-00418	R4S18SL	1/8" Single
613-00438	R4S38DL	3/8" Double
613-04316	R4S316SL	3/16" Single
613-04516	R4S516DL	5/16" Double
613-04532	R4S532SL	5/32" Single
613-00514	R5S14DL	1/4" Double
613-00518	R5S18SL	1/8" Single
613-00538	R5S38DL	3/8" Double
613-53165	R5S316SL	3/16" Single
613-00614	R6S14DL	1/4" Double
613-00618	R6S18SL	1/8" Single
613-00638	R6S38DL	3/8" Double
613-06316	R6S316SL	3/16" Single
613-06516	R6S516DL	5/16" Double
613-06532	R6S532SL	5/32" Single

SPACERS FOR
9" 4-SEGMENT

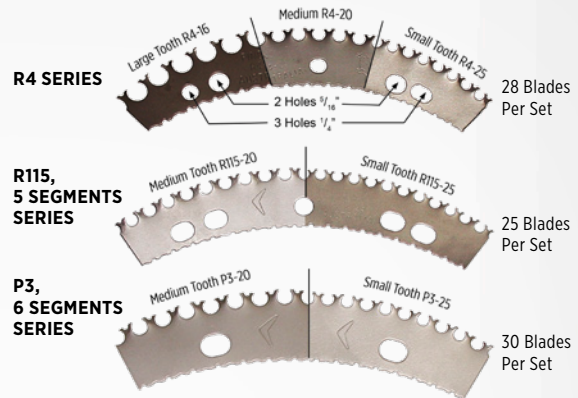
SPACERS FOR
11.5" 5-SEGMENT

SPACERS FOR
11.5" 6-SEGMENT

Available for contoured hubs

PINCOTT® STANDARD SERIES BUFFING RASP BLADES

- **Exclusive heat treating process**
- Reduced tooth breakage
- Cooler running
- Faster material removal
- No blade warpage
- Lower cost per buffed tire

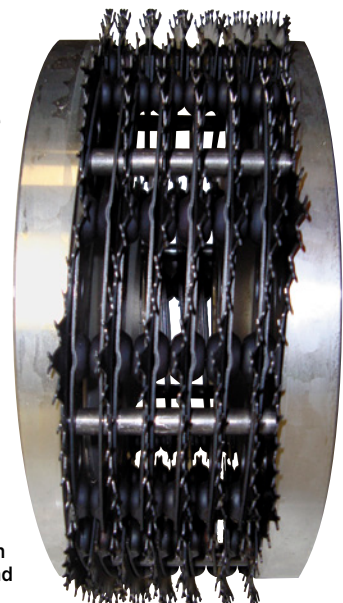


ASCOT NO.	MFG. NO.	DESCRIPTION
616-00320	PTP3-20	Fits All 11.5" 6-Segment Hubs
616-00325	PTP3-25	Fits All 11.5" 6-Segment Hubs
616-00416	PTR4 -16	Fits All 9" 4-Segment Hubs
616-00420	PTR4-20	Fits All 9" 4-Segment Hubs
616-00425	PTR4-25	Fits All 9" 4-Segment Hubs
616-11520	PTR115-20	Fits All 11.5" 5-Segment Hubs
616-11525	PTR115-25	Fits All 11.5" 5-Segment Hubs

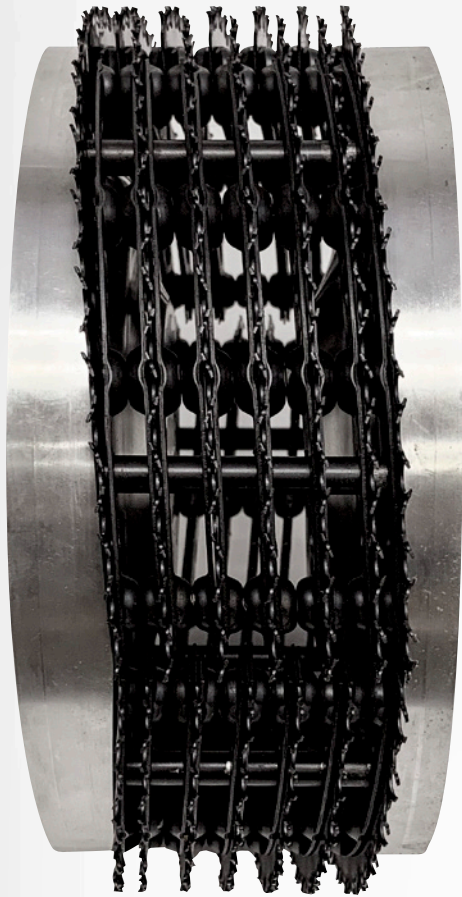
Other sizes available for contoured hubs and use with smart blades

HOW TO ORDER BUFFING HUBS

- 1 **Model/Make** of Buffer
- 2 **Arbor Hole Size**
- 3 **Keyway Size**, if any
- 4 **Pin Length**
- 5 **Rasp Blade Type**
- 6 **Hub Type:**
Non-Spiral, Heavy-Duty, All Purpose or Regular



Saturn hub pictured in Bandag setup with 20 each R4S38DL and 4 each R4S316SL.



Pincott Bandag Style Hub Model 408106

PINCOTT® RASP BLADES - SMART SERIES

▪ **Manufactured with a unique sinusoidal (wave-like) form which introduces a multidirectional cutting action** ▪ Wave-like form creates greater strength in the blade and its teeth ▪ Cutting action produces less drag on the rasp motor, saving you energy

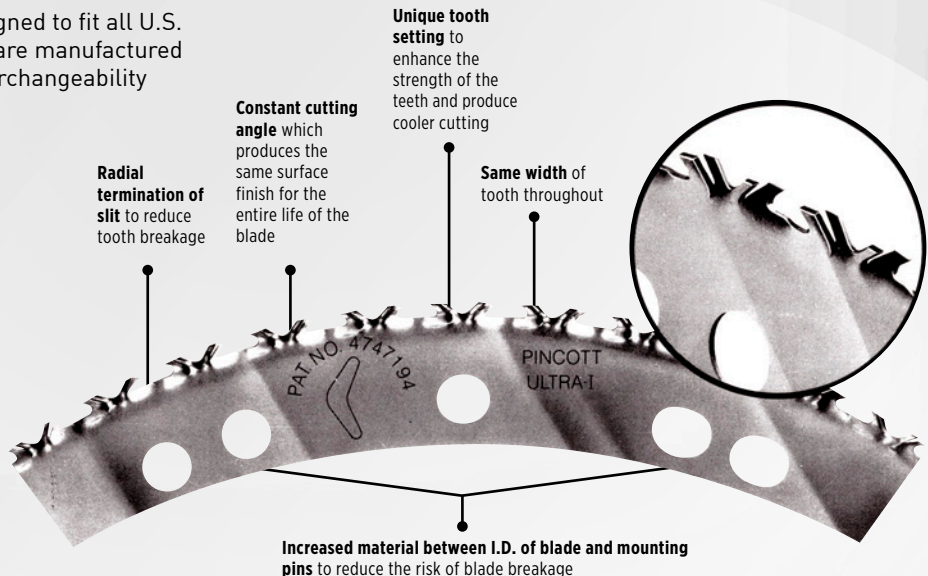


ASCOT NO.	MFG. NO.	DESCRIPTION
616-01155	Smart I	Fits all 11.5", 5-Segmented Hubs
616-00944	Smart II	Fits all 9", 4-Segmented Hubs
616-01156	Smart III	Fits all 11.5", 6-Segmented Hubs

PINCOTT® RASP BLADES - ULTRA SERIES

Pincott® buffing rasp blades are designed to fit all U.S. and European buffing machines and are manufactured with multiple stampings to allow interchangeability between two or three pin hubs.

- **Exclusive heat treating process** ▪ Reduced tooth breakage ▪ Faster material removal ▪ Cooler Running
- No blade warpage ▪ Lower cost per buffed tire



ASCOT NO.	MFG. NO.	DESCRIPTION
616-00111	Ultra I	Fits All 11.5", 5-Segmented Hubs
616-00222	Ultra II	Fits All 9", 4-Segmented Hubs
616-00333	Ultra III	Fits All 11.5", 6-Segmented Hubs

➔ Rasp Blades

Rasp Blades and Spacers (cont.)

EAGLE II BUFFING BLADES

▪ **Fast cutting and long lasting rasps for the best texture in all tire buffing operations** ▪ Tested under all conditions with outstanding results



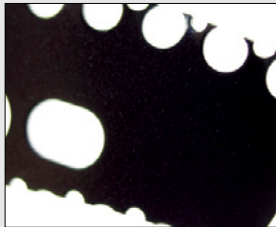
ASCOT NO.	MFG. NO.	DESCRIPTION	BLADES PER SET
616-11275	121181	Eagle II Refill	Eagle II refills 28 per set

BUFFING BLADES

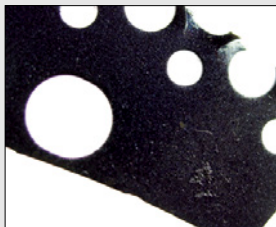
▪ **Proven to be the fastest cutting, longest lasting rasps with the best texture for all buffing operations**

▪ Refills have been tested under all conditions and used on all types of tire buffing equipment with outstanding results ▪ Can be used in existing Saturn II or R4 hub assemblies

▪ **Fast cutting, long life. Same texture from start to finish** ▪ **QUANTITY:** 30 sets per box



Jet Series



Apollo Series

ASCOT NO.	MFG. NO.	DESCRIPTION	TYPE	BLADES PER SET
616-43912	111136	Apollo II	Refill	28
616-43914	111137	Apollo III	Refill	30
616-43920	111140	S115-25	Refill	30
616-43921	111141	S115-20	Refill	30
616-11116	111116	R-4-25	Refill	28
616-01420	111119	R-4-20	Refill	28
616-11521	111107	R-115-20	Refill	25
616-21525	111104	R-115-25	Refill	25
616-43928	121177	Patriot II	Refill	28
616-43940	111172	Gemini II/SII	Refill	28
616-11173	111173	Gemini II/R4	Refill	28

HUB FOR EAGLE II

▪ Eagle II for use on most Bandag buffers



613-12900

ASCOT NO.	MFG. NO.	DESCRIPTION
613-12900	111031	Eagle II 9" Dia., 4" W., 1-1/2" Arbor

TURBO HOLE APPLICATION

▪ **B & J Rasps can be ordered with Turbo cooling channels producing a significant increase in cooling effect and blade performance.** These can be retrofitted to all existing B & J rasps.



616-11400

ASCOT NO.	MFG. NO.	DESCRIPTION
616-11400	111400	Turbo Hole Application

HAND RESHARPENING STONE

▪ **Used to hone the inside and outside of curved surfaces** ▪ Wooden Handle



534-80057

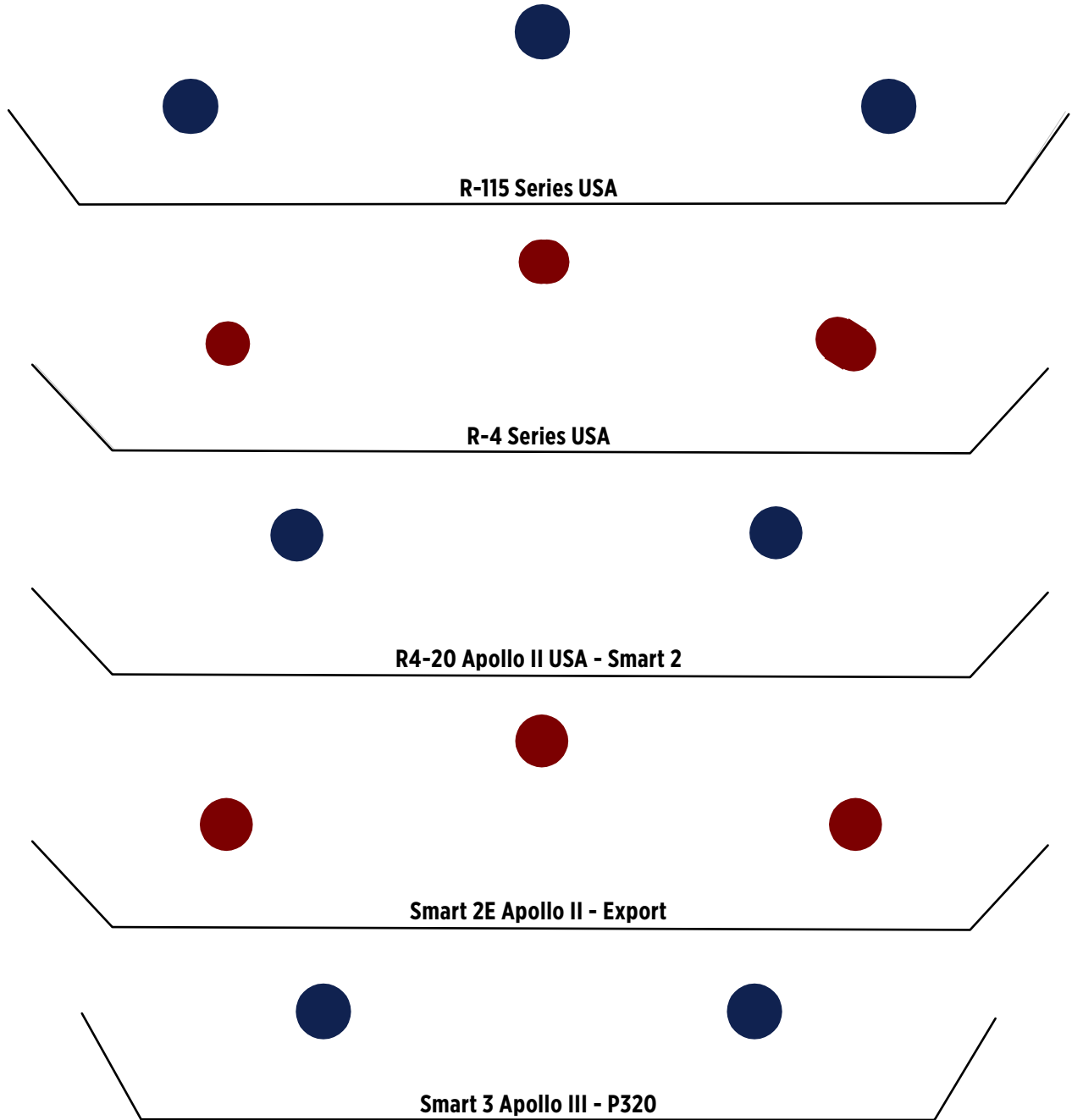


ASCOT NO.	MFG. NO.	DESCRIPTION
534-80057	819206	Hand Resharpener Stone

Blade Matching Guide

If you are looking for alternative blades to fit into your rasp simply position your blade over the pinhole marks below and find the matching blade. Use this reference to choose alternative blades on the respective pages in this catalog.

PLEASE NOTE: Some blades may be multi-fit.



➔ Rasp Blades, Spacers, Replacement Pins

Rasp Blades and Spacers (cont.)

REPLACEMENT PINS FOR ROCKET HUBS

▪ Special convex style hubs used on buffers must be returned to factory for pin replacement



Replacement Pin for Rocket Hubs

ASCOT NO.	MFG. NO.	PIN DIAM.	PIN LENGTH
613-43934	111207	5/16"	2-1/2"
613-43935	111207	5/16"	3"
613-43936	111207	5/16"	3-1/8"
613-43937	111207	5/16"	3-1/4"
613-43938	111207	5/16"	3-3/8"
613-43939	111207	5/16"	3-1/2"
613-43940	111205	5/16"	3-3/4"
613-43941	111206	5/16"	4"
613-43924	111208	5/16"	4-1/2"
613-43943	111208	5/16"	5"
613-43944	111208	5/16"	5-3/4"
613-43945	111208	5/16"	6"
613-43946	111208	5/16"	6-1/2"
613-43831	111208	5/16"	8"
613-43813	111203	1/4"	3"
613-43812	111203	1/4"	3-3/8"
613-43897	111201	1/4"	3-3/4"
613-43814	111202	1/4"	4"
613-43811	111204	1/4"	6"
613-43815	111204	1/4"	8"

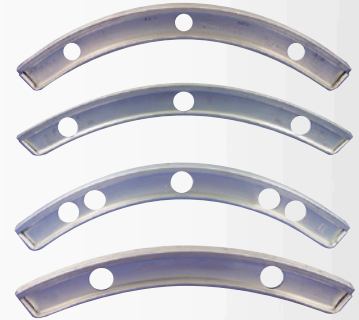
REPLACEMENT PINS & SPACERS FOR ROCKET HUBS

▪ I-Beam aluminum spacers available in 3/16", 1/4", and 3/8"

ASCOT NO.	MFG. NO.	DESCRIPTION
R-115 STYLE		
613-11205	111205	5/16" Pins / 3-3/4" Long
613-11206	111206	5/16" Pins / 4" Long
613-11207	111207	5/16" Pins / 3-3/8" Long
613-11301	111301	Aluminum I-Beam 3/8" Spacer
613-11302	111302	Aluminum I-Beam 1/4" Spacer
613-11303	111303	Aluminum I-Beam 3/16" Spacer
616-11304	111304	R-115 Aircooled Spacer 3/8"
616-11305	111305	R-115 Aircooled Spacer 1/4"
SATURN II STYLE		
613-11328	111328	Aluminum I-Beam 3/8" Spacer
613-11329	111329	Aluminum I-Beam 1/4" Spacer
613-11330	111330	Aluminum I-Beam 3/16" Spacer
613-11205	111205	5/16" Pins / 3-3/4" Long
613-11206	111206	5/16" Pins / 4" Long
613-11207	111207	5/16" Pins / 3-3/8" Long
SATURN III STYLE		
613-11205	111205	5/16" Pins / 3-3/4" Long
613-11206	111206	5/16" Pins / 4" Long
613-11207	111207	5/16" Pins / 3-3/8" Long
EAGLE I STYLE		
613-11380	111380	Aluminum I-Beam 3/8" Spacer
613-11381	111381	Aluminum I-Beam 1/4" Spacer
613-11382	111382	Aluminum I-Beam 3/16" Spacer
613-11205	111205	5/16" Pins / 3-3/4" Long
613-11206	111206	5/16" Pins / 4" Long
EAGLE II STYLE		
613-11383	111383	Aluminum I-Beam 3/8" Spacer
613-11384	111384	Aluminum I-Beam 1/4" Spacer
613-11385	111385	Aluminum I-Beam 3/16" Spacer
613-11205	111205	5/16" Pins / 3-3/4" Long
613-11206	111206	5/16" Pins / 4" Long
R4 STYLE		
613-11201	111201	1/4" Pins / 3-3/4" Long
613-11202	111202	1/4" Pins / 4" Long
613-11310	111310	Aluminum I-Beam 3/8" Spacer
613-11311	111311	Aluminum I-Beam 1/4" Spacer
613-11312	111312	Aluminum I-Beam 3/16" Spacer
616-11313	111313	R4 Aircooled Spacer 3/8"
616-11314	111314	R4 Aircooled Spacer 1/4"

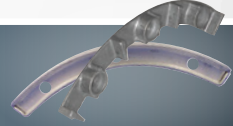


Note: For optimum performance replace spacers and pins as a set



To properly rebuild a Saturn II rasp hub order the following components:

QTY.	MFG. NO.	DESCRIPTION
8	111205	5/16" x 3-3/4" Pins
20	111328	3/8" I-Beam Spacers
4	111330	3/16" I-Beam Spacers



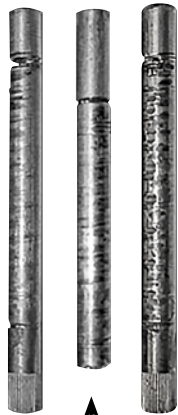
Please contact us for more information regarding **REPLACEMENT PINS & SPACERS**

When to Replace Hubs, Pins and Spacers?

▶ USE THESE REPLACEMENT TIPS AS A HELPFUL GUIDE



Insist on the Original!

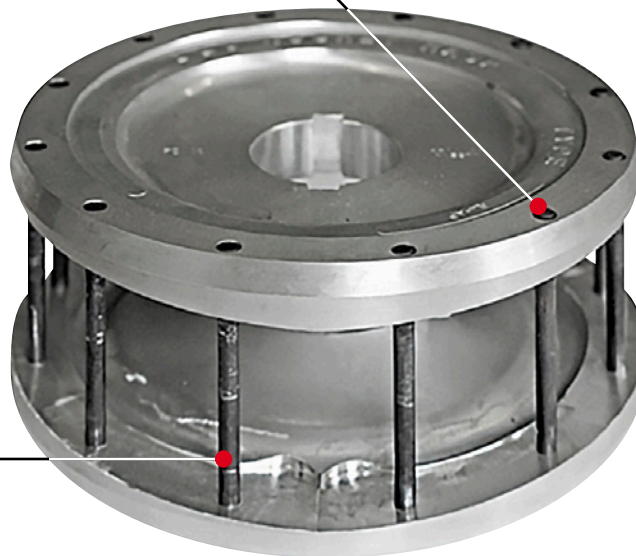
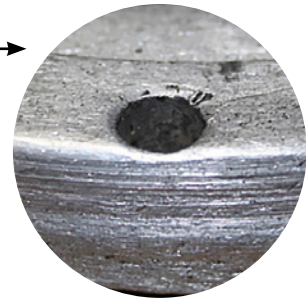


PINS SHOULD BE REPLACED WHEN:

- Worn, bent, or cut
- Deep grooves from blade refills

HUBS SHOULD BE REPLACED WHEN:

- Insufficient material outside the pinholes
- Pinholes worn from loose pins



Don't neglect to watch out for the warning signs of when these parts need replacing!

SPACERS SHOULD BE REPLACED WHEN:

- Uneven thickness of spacers
- Rubber dust built up/clogged on spacers
- Visible damage, cracks



RETREADING // RASP BLADES & SPACERS

➔ Rasp Blades, Spacers, Replacement Pins

Rasp Blades and Spacers (cont.)

PINS FOR EAGLE II HUBS

ASCOT NO.	MFG. NO.	DESCRIPTION
613-11206	111206	Eagle II Long Pins 5/16"



616-11206

SATURN II STYLE AIR COOLED SPACER

ASCOT NO.	MFG. NO.	DESCRIPTION
616-11365	111365	Saturn II Aircooled Aluminum Spacer 3/8" - 2 Pinholes for Saturn II US Domestic Rasp



616-11365

B & J OUTER SUPPORT SPACERS

ASCOT NO.	MFG. NO.	DESCRIPTION
613-11391	111391	Saturn II Outer Support Spacers (Box of 8)



616-11391

REPLACEMENT SPACERS FOR EAGLE II HUBS

ASCOT NO.	MFG. NO.	DESCRIPTION	SPACER WIDTH
613-11383	111383	Eagle II Spacer (Standard)	3/8"
613-11384	111384	Eagle II Spacer	1/4"
613-11385	111385	Eagle II Spacer	3/16"



ROCKET RASP ROTARY GOUGES



616-11605

616-11612

ASCOT NO.	MFG. NO.	DESCRIPTION
616-11603	810603	1-1/4" Dia. Mini No Notch 3/8" 24 THD (3/Set)
616-11604	810604	1-1/4" Dia. Mini No Notch 3/8" AH (3/Set)
616-11605	810605	2" Dia. Heavy Wall No Notch 1/2" AH
616-11606	810606	2" Dia. Heavy Wall No Notch 1/2" AH
616-11610	810610	2" Dia. Thin Wall No Notch 3/8" AH (2/Set)
616-11612	810612	2" Dia. Thin Wall Notched 3/8" AH (2/Set)
616-16101	810610-1	2" Dia. Thin Wall No Notch 1/2" AH (2/Set)
616-16102	810610-2	2" Dia. Thin Wall No Notch 3/8" 24 THD (2/Set)
616-16121	810612-1	2" Dia. Thin Wall Notched 1/2" AH (2/Set)
616-16122	810612-2	2" Dia. Thin Wall Notched 3/8" 24 THD (2/Set)

PINCOTT® ROTARY GOUGES

ASCOT NO.	MFG. NO.	DESCRIPTION
613-91501	901501	2" Dia. Heavy Wall, 1/2" Arbor Hole (2 per Box)
613-91502	901502	2" Dia. Heavy Wall, 3/8"-24 Thread Arbor Hole (2 per Box)
613-91503	901503	2" Dia. Thin Wall, 3/8" Arbor Hole (2 per Box)
613-91321	901321	1-1/4" Dia. Heavy Wall, 3/8"-24 Thread Arbor Hole (3 per Box)
613-91322	901322	1-1/4" Dia. Thin Wall, 3/8" Arbor Hole (3 per Box)
613-91207	901207	3/4" Dia. Thin Wall, 3/8"-24 Thread Arbor Hole (4 per Box)

B & J ROCKET SQUIGGLY RASP

- Fast Rubber Removal
- No scorching ▪ Easy Control ▪ Long life
- No regritting costs



616-82013

ASCOT NO.	MFG. NO.	DESCRIPTION
616-82013	820103	10 Blades w/ Support Plate (10 per Pack)
616-82014	820104	24 Blades w/ Support Plate (24 per Pack)

MINI RASPS

- These Mini Rasps are very efficient when larger amounts of rubber have to be removed quickly, for example in the event of very large repairs they can drastically reduce the required buffout time
- Both Mini Rasp versions are available individually or as complete, ready-to-use kits with adapters for use on quick change chucks



539-11075

539-11076

ASCOT NO.	MFG. NO.	DESCRIPTION
539-11075	111075	R-5 Rasp Complete (1 Set of R-5 Refills, 6 Alu Washer, NV 11 Adapter R-5)
539-11134	111134	R-5 Refills (1 Set of 5 Pieces)
539-11076	111076	R-6 Rasp Complete (1 Set of R-6 Refills, 7 Alu Washers, NV 11 Adapter R-6)
539-11133	111133	R-6 Refills (1 Set of 6 Pieces)

PINCOTT® MINI RASPS

ASCOT NO.	MFG. NO.	DESCRIPTION
539-00005	PTP5	P5 Refill (6 per Box)
539-00006	PTP6	P6 Refill (6 per Box)

RETREADING // RASP BLADES & SPACERS

➔ Precure Shop Accessories, Hose Assemblies, Couplers & Plugs

Retread Accessories

PRECURE SHOP ACCESSORIES



639-11073

ASCOT NO.	ITEM NO.	DESCRIPTION
639-11073	11073	Fasco Air Stapler
639-11081	11081F	Duofast Air Stapler FIB-50-16
639-11139	11139F	Bostitch Air Stapler 31, FIB-84-16
639-50000	T-CS5000	Duofast Hand Stapler
639-50806	ED-508C-06	Duofast 1/4" Staples (5,000 per Box, 20 Boxes per Case)
639-50184	ED-5018C-14	Duofast 9/16" Staples (5,000 per Box, 20 Boxes per Case)
639-42308	ESBNK-4023-08	Bostitch 5/16" Staples (10,000 per Box, 20 Boxes per Case)
639-42312	SBNK4023-12	Bostitch 1/2" Staples (10,000 per Box, 10 Boxes per Case)

PRECURE TREAD STAPLES

ASCOT NO.	MFG. NO.	DESCRIPTION
639-10800	11073F	Fasco Staple Gun FIB 80-16
639-02338	ESBNK402310	Bostitch 3/8" Staples (10,000 per Box, 20 Boxes per Case)
639-05010	ED5010C08	Duofast 5/16" Staples (5000 per Box, 20 Boxes per Case)
639-08008	EB8008	20ga Chisel Point 5/16" Staples - Fits Fasco, BeA (10,000 per Box, 24 Boxes per Case)
639-05012	ED5012C10	Duofast 3/8" Staples (5000 per Box, 20 Boxes per Case)



We stock many brands of **STAPLES AND STAPLERS**. Please call us for details.

TEFLON HOSE ASSEMBLIES FOR PRECURE RETREADING SYSTEMS

- Teflon hose assemblies in any length are available for all precure tire retreading equipment including Bandag, Harrelson, Vulcan, etc.
- Hoses are used inside the chamber for inflating the tire and evacuating the air from the envelope
- Hoses are made of an innercore of extruded Teflon and covered with stainless steel braid reinforcement
- All hoses have permanent swage-type brass end fittings 1/4"-18 male pipe (NPT)



Call us for ordering information!

COUPLERS & PLUGS



ASCOT NO.	MFG. NO.	DESCRIPTION
645-01000	1000	1/4" Bandag-Type Coupler
645-00011	11E	Plug Tire Valve Stem Steel Fits 5/16"-32 Ft.
645-03000	W-3000HT	High Temperature Washer for 1000 Above
HANSEN SPECIAL COUPLER FOR PRESS TYPE MATRIX		
645-00321	B3HD21Y	Coupler (Brass)
645-21192	B3K21192	Plug (Brass)
1/4" BANDAG-TYPE COUPLERS/ADAPTERS		
645-00017	CST17B	Chamber Exhaust Coupler (Brass)
645-00117	CPST17B	Chamber Envelope Adapter (Brass)
645-02014	2014EPR	Thin Replacement O-ring
645-02110	2110EPR	Wide Replacement O-ring
PARKER SPECIAL COUPLER MRT		
645-01604	BH1-60Y4FP	Coupler Vacuum Seal
645-16171	BH1-61-711	MRT Coupler Adapter
BAIRD STYLE COUPLERS AND ADAPTERS		
645-08476	874-6	Straight Thru With 90° Side Exhaust Coupler For Envelope Use
645-00874	874	90° Hose Inlet Coupler For Tube
645-00812	812	.302 Valve Steam Adapter
645-00814	814	.482 Envelope Adapter

RETREADING // RETREAD ACCESSORIES

➔ Nailhole Tester/Spreader, Portable Spraying Equipment

Retread Accessories (cont.)

Branick



NAILHOLE TESTER/SPREADER

- **Electric variable speed rotation** ▪ Quick change probe heads
- Hand and foot operated bi-directional rotation ▪ Auto-stop flaw detection
- Visible spark at flaw location ▪ Four air tool ports and two 110V outlets
- Accurate flaw detection ▪ Uses standard 110V power
- Hand-operated spread and lift ▪ Adjustable work height
- *Includes medium truck probe*



VARIABLE
SPEED
ROTATION

606-57000

ASCOT NO.	MFG. NO.	DESCRIPTION	APPLICATION
PARTS FOR NAILHOLE TESTER/SPREADER			
606-10269	01-0269	Probe, Medium Truck - BTT	For use on 22.5"/24.5" truck tires
606-10270	01-0270	Probe, X-1 Truck - BTT	For use on X-1 truck tires
606-10271	01-0271	Probe, Wide Base Truck - BTT	For use on wide base truck tires
606-10272	01-0272	Probe, 315 Truck - BTT	For use on 315 truck tires
606-10273	01-0273	Probe, Light Truck - BTT	For use on 16" to 19.5" truck tires
606-40040	40-0040	Key Chain Set (Bag of 35)	Chain set for Chain Bar
606-42015	42-0015	Wire, 13" Sensor (Metal Insert)	Sidewall Wire
606-42016	42-0016	Wire, 19" Sensor (Nylon Insert)	Sidewall Wire
606-42017	42-0017	Wire, 16" Sensor (Nylon Insert)	Sidewall Wire
606-42018	42-0018	Wire, 26.5" Sensor (Metal Insert)	Sidewall Wire
606-42019	42-0019	Wire, 19" Sensor (Metal Insert)	Sidewall Wire
606-10192	01-0192	Probe, Medium Truck - NDT	For use on 22.5"/24.5" truck tires
606-10253	01-0253	Probe, X-1 Truck - NDT	For use on X-1 truck tires
606-10193	01-0193	Probe, Wide Base Truck - NDT	For use on wide base truck tires
606-10252	01-0252	Probe, 315 Truck - NDT	For use on 315 truck tires
606-10191	01-0191	Probe, Light Truck - NDT	For use on 16" to 19.5" truck tires

ASCOT NO.	MFG. NO.	DESCRIPTION
606-57000	BTT-5700-S	Nailhole Tester/Spreader - Steel/Fabric
606-57001	BTT-5700-SF	Nailhole Tester/Spreader - Steel/Fabric

PORTABLE SPRAYING EQUIPMENT

- **PORTABLE SPRAYER INCLUDES:** Pump, 25' x 1/4" airless hose, gun swivel, silver spray gun and tip of choice
- **Recommended Graco tip #163-415**



651-32437

HEAVY
DUTY

INCLUDES
GUN TIP OF
CHOICE

ASCOT NO.	MFG. NO.	DESCRIPTION
651-32437	232-437	23:1 Cement Sprayer
651-35462	235-462	Silver Airless Spray Gun Only
651-63415	163-415	Silver Tip, .015" Orifice, 8-10" Fan Width

➔ Retread Brushes, Flexible Shaft Machines, Wheel Arbor Adapters



RETREAD BRUSHES

▪ Used for applying and stippling in cement



653-40082

ASCOT NO.	MFG. NO.	DESCRIPTION
653-40082	40082	2" Diameter Stipple Brush



TACK BANDS FOR SMOOTH, FINE TEXTURE



539-80002



539-80003



539-80012



539-80013

ASCOT NO.	MFG. NO.	DESCRIPTION
539-80002	H12	OX2R 2-1/2" OD x 1" W
539-80003	H11	OX3R 2-1/2" OD x 5/8" W
539-80012	OX2-R	2-1/2" OD x 1" W
539-80013	OX3-R	1-1/2" OD x 5/8" W



WYCO FLEXIBLE SHAFT MACHINES

▪ Versatile Wyco Flexible Shaft Machines are offered for the various needs in foundries, steel welding shops, sheet metal fabricators, maintenance departments, forging plants, tire shops ▪ TYPICAL APPLICATIONS INCLUDE:

Wood or metal finishing, rust or paint removal, auto body sanding, tire buffing, etc. ▪ Many types of accessories are used with these machines, including edge-type grinding wheels, wire brushes, sanding discs, depressed center wheels, tire rasps, sanding drums



ASCOT NO.	MFG. NO.	CORE CASING & HANDPC. NO.	LENGTH (FEET)	CORE NO.	CASING	STRAIGHT HANDPC.
516-00491	49-1	10R	5	C-10	K-10	3500
516-00492	49-2	10R	5	C-10	K-10	3500
516-00493	49-3	2R	6	C-2	K-2	3500
516-00494	49-4	2R	6	C-2	K-2	3500
516-00495	49-5	30R	7	C-30	K-30	551
516-00496	49-6	30R	7	C-30	K-30	551
516-04914	49-14	4R	7	C-4	K-4	551

WHEEL ARBOR-ADAPTERS

▪ For grinding wheels or wire brushes
 ▪ 9/16"- 18 female thread to fit Wyco handpieces

ASCOT NO.	MFG. NO.	WHEEL WIDTH	MALE THREAD
FOR GRINDING WHEELS AND OTHER ACCESSORIES			
516-00305	305	5/8"	3/8"-24
516-00405	405	1"	1/2"-20
516-00505	505	1-1/2"	1/2"-20
516-00605	605	1-1/2"	5/8"-18

ASCOT NO.	MFG. NO.	DESCRIPTION
FOR ROTARY RASPS		
516-01305	305R	Threaded 3/8" (16 To Fit Rasps)
516-01405	405R	Threaded 1/2" (13 To Fit Rasps)



516-00405

RETREADING // RETREAD ACCESSORIES

➔ Expandable Rim Assemblies, Retread Release Liner

Retread Accessories (cont.)

EXPANDABLE RIM ASSEMBLIES AND REPLACEMENT BELTS

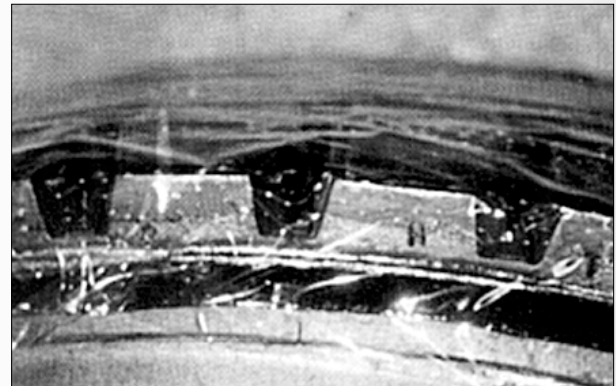


POLY EASE RETREAD RELEASE LINER

▪ American made perforated polypropylene film is specified to soften at 311°F and melt at 328°F ▪ For low temp bonding chambers ▪ 75 Gauge ▪ Custom widths are also available ▪ High temp film available

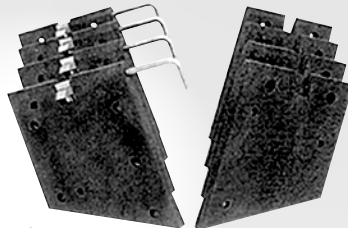


EXP. RIM ASSEMBLIES ASCOT NO.	EXP. RIM ASSEMBLIES MFG. NO.	RIM SIZE	BEAD WIDTH	REPL. BELTS ASCOT NO.	REPL. BELTS MFG. NO.
613-39020	309020	12-14"	5"	613-28260	309510
613-00436	309030	13-16"	6-3/8"	613-00660	309520
613-33379	309962	13-16"	7-1/2"	613-33382	309521
613-28081	309963	13-16"	11-3/8"	613-28160	309522
613-32769	309942	14-17"	6"	613-32773	309541
613-00937	309140	14-17"	7-1/8"	613-02701	309540
613-28313	309150	14-17"	9-1/4"	613-02821	309550
613-00938	309952	14-17"	11-3/8"	613-02702	309560
613-00465	309040	17-20"	6-1/2"	613-01653	309570
613-32774	309202	17-20"	8-1/4"	613-32778	309242
613-28271	309211	18-20"	7-5/8"	613-33717	309354
613-00470	309220	17-20"	13-1/4"	613-01332	309580
613-00674	309230	18-20"	16-3/8"	613-02092	309356
613-23800	309602	20-22.5"	8-1/4"	613-33092	309622
613-00466	309050	20-22.5"	9"	613-01715	309610
613-32822	309183	20-22.5"	11-3/4"	613-32826	309612
613-33162	309021	20-22.5"	14-1/2"	613-33007	309491
613-25718	309190	22-24.5"	7-1/2"	613-25839	309600
613-33093	309282	22-24.5"	8-1/4"	613-33094	309302
613-00846	309060	22-24.5"	9"	613-02533	309630
613-00467	309070	22-24.5"	13-3/8"	613-01955	309640
613-33564	309912	22-24.5"	14-1/2"	613-33568	309641
613-00839	309913	22-24.5"	18-1/2"	613-02516	309643
613-00699	309490	23-25"	13-3/8"	613-11955	309500
613-00705	309890	27-29"	14"	613-02184	309644



Poly Ease Retread Release Liner in use.

EXPANDABLE HUB REPLACEMENT STEMS



ASCOT NO.	MFG. NO.	DESCRIPTION
613-00512	900512	Garter Spring
613-09111	309111	4 Lock 8 Plain Stem Set
613-19111	30911L	12 All Lock Stem Set
613-29617	729617	Steel-Inserted Plain Stem
613-29618	729618	Steel-Inserted Plain Locking Stem

ASCOT NO.	MFG. NO.	WIDTH	LENGTH	QTY./BOX	WEIGHT/ROLL
634-12027	PP12HD	12"	2700'	2	26 lb.
634-14027	PP14HD	14"	2700'	2	30 lb.
634-15027	PP15HD	15"	2700'	2	32 lb.
634-18027	PP18HD	18"	2700'	1	33 lb.

➔ Envelope Sealing Rings, Sidewall Buffing Brush, Wicking Products, Wicking Pads

ENVELOPE SEALING RINGS*



- Heavy duty Acme Threads
- Sliding shield on outer body
- Ergonomic handle
- Oil-impregnated bushings



ASCOT NO.	MFG. NO.	DESCRIPTION
644-12345	644	Envelope Sealer Rings

*Available Sizes: 14", 15", 16", 16.5", 17", 17.5", 19.5", 20", 22", 22.5", 24" & 24.5"

BANDAG SIDEWALL BUFFING CUP AND BRUSH



538-12900

ASCOT NO.	MFG. NO.	DESCRIPTION
538-12900	RH129	4" Buffing Cup, 3/4" Arbor Hole, SSG 390
535-06020	6020	Wire Brush, .0118 Wire Size
535-03811	3811	2" to 3/4" Arbor Hole Adapter Plates

WOVEN ROLL WICKING

- For use with valve type processes
- Full rolls only
- Treated with a special release agent to prevent adhesion to the cushion gum



634-05586

ASCOT NO.	DESCRIPTION	SIZE
634-05586	Woven Roll Wicking - Green	1-1/2" x 180'
634-05587	Woven Roll Wicking - Green	2" x 180'

STRETCH WICKING PRODUCTS

- For use with valve-type envelopes
- All 4-ply



ASCOT NO.	DESCRIPTION	QTY./BOX
634-00812	8" x 12" Stretch Wicking Pad	24
634-00815	8" x 15" Stretch Wicking Pad	24
634-00820	8" x 20" Stretch Wicking Pad	24
645-01812	WKMICH8X12 Michelin Wicking Pad	24
645-01815	WKMICH8X15 Michelin Wicking Pad	24

RUBBER WICKING PADS

- High elasticity compound eliminating tread deformations
- More durable than cloth wick pads and can be used repeatedly
- Eliminates use of venting poly underneath
- Excellent thermal resistance, reducing aging for extended use



ASCOT NO.	MFG. NO.	SIZE	QTY./BOX
634-00115	DL01-15	55.50" x 6.75"	15
634-00315	DL03-15	48.75" x 6.75"	15
634-00515	DL05-15	29" x 5"	15

RETREADING // RETREAD ACCESSORIES

➔ Cushion Gum, Stripping Stock, Rope Rubber, Rubber Solvent, Cement

Retread Consumables

JET CUSHION GUM

- Designed to line skived areas to improve adhesion
- Available in multiple widths and thicknesses
- Available in black or grey
- All sizes sold in approximately 25 lb. increments and priced by the pound

CURING TEMPERATURE RANGE (250° - 320°):

- **074 (Regular Cure)**
RMA Cure Class 25A-280°
- **914 (Fast Cure)**
RMA Cure Class 10A-280°

CURING TEMPERATURE RANGE (200° - 250°):

- **440 (Low Temp Cure)**
RMA Cure Class 75E-210°

When ordering cushion gum please specify the curing temperature that you are curing at, the width and thickness of the cushion gum. Please call for more details.



Jet Cushion Gum

STRIPPING STOCK

- Stripping Stock curing temperatures 914, 074, 440
- Free flowing quality stock for stripping edges of tread rubber to cover excess buffed surfaces
- APPLICATIONS: Used on sidewalls to improve appearance
- 25 lb. box
- Available at any gauge & width

1" Stripping Stock



2" Stripping Stock

JET ROPE RUBBER

- Rubber extruded is rope form
- Especially for mini-extruder guns
- APPLICATIONS: For filling buzz-outs, section repairs, cuts & snags
- Available in 1/4" or 3/8" diameters
- All sizes sold in approximately 25 lb. increments and priced by the pound



Jet Rope Rubber

Use RR074 for repairing with section mold or spotter:

250° - 280° (Regular cure)

Use RR914 for hot or precure retreading:

250° - 320° (High temperature). Fast Cure

Use RR440 for low temperature precure retreading:

200°-250°

JET RUBBER SOLVENT

- Pure Aliphatic Hydrocarbon
- Free from oils and impurities
- APPLICATIONS: For diluting or thinning heavy viscosity cements and tire paint; For cleaning buffed retread and repair surfaces; For freshening cushion gum and other uncured rubber stocks



633-50105

ASCOT NO.	MFG. NO.	DESCRIPTION
633-50105	CI31-5GAL	5-Gallon Container
633-50154	CI31-54GAL	54-Gallon Container

JET BLACK VULCANIZING CEMENT

- BRUSH TYPE: An excellent repair cement
- Contains special additives to bond to exposed cords such as nylon, rayon, fiberglass, polyester & polyaramid
- Use within 15 minutes on exposed steel for best adhesion
- Superior tack and excellent cured adhesion



633-83005

- SPRAY TYPE: An all purpose cement for both hot capping and precure retreading
- Also used for repairing
- High tack cement
- Excellent cured adhesion and provides superior bond and tack
- Available in 32 oz. and 54 Gallon



633-83015

ASCOT NO.	MFG. NO.	DESCRIPTION
633-83005	CH03-5GAL	5-Gallon Brush Cement
633-83015	CH00-5GAL	5-Gallon Spray Cement

RETREADING // RETREAD CONSUMABLES

Tire Appearance

SURE SHOT PRESSURE SPRAYERS



- Air pressurized and refillable
- Environmentally safe, eliminates aerosol usage
- For brake and parts cleaner, penetrating oils, lubricants, degreasers, solvents
- **MADE IN USA**



632-02400



ASCOT NO.	MFG. NO.	DESCRIPTION
632-00005	K-5	Partial Repair Kit for Model A Sure Shot Sprayers
632-00010	K-10	Complete Repair Kit for Model A Sure Shot Sprayers
632-01002	A1002	Sure Shot Black Enameled Steel Sprayer w/ Adjustable Nozzle
632-10001	A1000R	Sure Shot Enameled Steel Sprayer (Red)
632-02400	M2400S	Anodized Aluminum Sprayer

MOLD LUBRICANT (CONCENTRATED)

- Release molded retreads with ease and keep molds clean at the same time
- This non-flammable, odorless formula allows rubber to flow freely and prevents carbon buildup
- Produces a superior satin finish with no staining
- Economical concentrate may be diluted with up to 20 parts water to one part lubricant



647-24501

ASCOT NO.	DESCRIPTION
647-24501	Mold Lubricant (1-Gallon)
647-24505	Mold Lubricant (5-Gallon)

ROBBINS ENVELOPE LUBE



- Spray on inside of the envelope, spray on while envelope is hot to dry faster, spray after first cure and then every 30 cures or as needed
- Quart container is a convenient spray bottle
- **Ready to use, no dilution required**



647-05611



647-05612

ASCOT NO.	MFG. NO.	DESCRIPTION
647-05611	5611	Robbins Envelope Lube (1-Quart)
647-05612	5612	Robbins Envelope Lube (1-Gallon)
647-05613	5613	Robbins Envelope Lube (5-Gallon)

RETREADING // TIRE APPEARANCE

➔ Tire Paint, Shine, Bead Release

Tire Appearance (cont.)



BLACK TIRE PAINT

- Water based, premixed or concentrated
- **Specially formulated black paint for improved appearance, coverage and tire adhesion**
- Makes retread and used tires look like new
- Creates a clean black satin finish
- Covers crayon marks and dirt
- Dries quickly with low odor, will not rub off, even when wet
- Available premixed and ready for use, or in economical concentrate which dilutes with water



497-84405

ASCOT NO.	MFG. NO.	DESCRIPTION
497-83901	E839	Black Tire Paint Premixed (1-Gallon. Siphon Fed Paint Systems)
497-83905	E839	Black Tire Paint Premixed (5-Gallon. Siphon Fed Paint Systems)
497-83955	E839	Black Tire Paint Premixed (55-Gallon. Siphon Fed Paint Systems)
497-84101	E841	Black Tire Paint Premixed (1-Gallon. Pump Fed Paint Systems)
497-84105	E841	Black Tire Paint Premixed (5-Gallon. Pump Fed Paint Systems)
497-84155	E841	Black Tire Paint Premixed (55-Gallon. Pump Fed Paint Systems)
497-84401	E844	Black Tire Paint Concentrate (1-Gallon)
497-84405	E844	Black Tire Paint Concentrate (5-Gallon)
497-84455	E844	Black Tire Paint Concentrate (55-Gallon)



REMA SHINE

REMA SHINE is quick and easy to use and gives your tires a deep long lasting shine.

- Water-based silicone dressing
- Ideal for tires and exterior moldings
- Excellent for interior plastic and vinyl trim
- Provides high gloss restoring original beauty
- Deep long-lasting shine
- Convenient, ready-to-use formula
- Pleasant odor and VOC compliant



395-10100

ASCOT NO.	MFG. NO.	DESCRIPTION
395-10100	101000110	REMA Shine

BLACK-OUT BLACK TIRE PAINT

- **Ready to use water based black tire paint**
- Restores the original appearance of retreaded and used tires
- Covers crayon marks, scuffs and dirt to give the tire a new fresh look
- Works with machine or hand application
- Compatible with tire painting machines



497-00005

ASCOT NO.	MFG. NO.	DESCRIPTION
497-00005	Blackout-5	Black-Out Black Tire Paint (5-Gallon)
497-00055	Blackout-55	Black-Out Black Tire Paint (55-Gallon)

EXPANDABLE HUB LUBE

- **Excellent lubricant for expandable hubs**
- Ready-To-Use formula
- Quick/easy application
- Petroleum/Silicone free
- No mess or product build-up on equipment
- 70+ tires per application
- Specifically designed for use for expandable hubs utilized in retread shops



647-00032

ASCOT NO.	MFG. NO.	DESCRIPTION
647-00032	EHL-32	Expandable Hub Lube (32 Oz. Spray Bottle)

Please contact us for more information regarding **Tire Appearance Products**

RETREADING // TIRE APPEARANCE

Envelope Expander, Inside Envelopes

Envelopes

NUMBER OF ENVELOPES REQUIRED



- Ideally, a shop needs enough envelopes so that an envelope never has to be put on a tire until it has reached room temperature.
- For each chamber in use you would need enough envelopes for tires in the chamber, tires on the mono-rail and tires being prepared for the mono-rail.
- As the envelope size mix can change daily, this must be considered in the number required.

INSTALLATION INSIDE/OUTSIDE SEALING SYSTEMS



- Make sure that wicking pad straps are securely inside of tire.
- Before removing the assembled tire from the envelope table, rotate the valve to the position required for mono-rail and chamber hook-up.
- Once the tire is picked up and placed on the hook, it is recommended that the tire not be rotated. Rotating the tire on the hook with the weight of the tire and envelopes bearing down on the inner envelope could cause cuts and tears.
- Perform regular checks of the tire holding platform and table for burrs and rough edges.

TAKING ENVELOPES OUT OF SERVICE

OUTSIDE ENVELOPES SHOULD BE TAKEN OUT OF SERVICE IF ANY OF THESE NOTED PROBLEMS OCCUR

- Holes or tears are too large to repair.
- Folds are created when drawing vacuum and can't be moved up to a larger tire.
- It has taken tread design patterns in the crown area.
- It has developed small holes over the outside surface that is subjected to the chamber air pressure.
- Has ozone cracks.

ACCU FIT II/INNERLOPE INSIDE ENVELOPES

ASCOT NO.	MFG. NO.	OUTSIDE	TIRE SIZE
643-40001	40x8-24.5	4422	305/75R24.5 Deep Lug
643-40002	40x8-24.5	4223	305/75R24.5
643-40003	38x8-24.5	4224	285/75R24.5, 275/80R24.5
643-40004	42x8-24.5	4422	12R24.5
643-40005	42x8-24.5	4422	11R24.5
643-40006	44x10-24.5	4423	12.00R24
643-40007	42x10-24.5	4422	11.00R24
643-40008	42x10-22.5	4422	455/55R22.5
643-40009	44x12-22.5	4522	445/65R22.5 18R22.5
643-40010	40X8-22.5	4219	445/50R22.5, 315/80R22.5, 305/85R22.5
643-40011	44x10-22.5	4522	425/65R22.5 16R22.5
643-40012	42x10-22.5	4422	385/65R22.5 15R22.5
643-40013	38x8-22.5	4023	305/75R22.5, 305/70R22.5, 295/80R22.5, 295/75R22.5, 275/80R22.5
643-40014	35x8-22.5	3822	275/70R22.5, 265/75R22.5, 255/80R22.5, 255/70R22.5, 245/75R22.5, 235/80R22.5
643-40015	40x8-22.5	4224	12.75R22.5, 12R22.5, 10.00R22
643-40016	38x8-22.5	4224	11R22.5, 10R22.5
643-40017	35x8-22.5	3822	9R22.5
643-40018	42x8-22.5	4422	11.00R22
643-40019	42x10-20	4422	365/80R20
643-40020	42x8-20	4423	14/80R20
643-40021	44x12-20	4522	14.00R20
643-40022	40x8-20	4224	13/80R20, 11.00R20, 10.00R20
643-40023	42x10-20	4422	12.00R20
643-40024	38x8-20	4023	9.00R20
643-40025	35x8-20	3822	8.25R20
643-40026	35x8-19.5	3521	305/70R19.5
643-40027	32x8-19.5	3521	285/70R19.5, 265/70R19.5, 24570/R19.5
643-40028	29x7-19.5	3218	225/70R19.5
643-40029	29x7-19.5	3218	8R19.5
643-40030	29x7-17.5	3117	245/70R17.5, 215/75R17.5
643-40031	35x8-17.5	3822	11R17.5
643-40032	32x8-17.5	3521	10R17.5, 9.5R17.5, 9R17.5
643-40033	31x6-17.5	3218	7.50-17
643-40034	29x7-16	3218	245/75R16, 235/85R16, 215/85R16, 7.50R16
643-40035	27x5-16	2916	225/75R16
643-40036	10.00-15 HB	3521	10.00R15
643-40037	8.25-15 HB	3218	8.25R15
643-40038	7.50-15 HB	3117	7.50R15

Envelope Spreader Available. Call for Details.



643-00750



Envelopes (cont.)

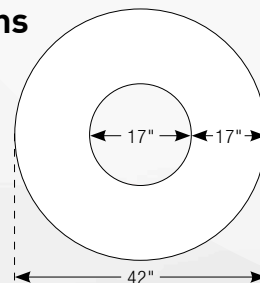
ROBBINS PRE-CURE ENVELOPES

Robbins manufactures high quality envelopes in a multitude of sizes that are used in the retreading of passenger, industrial, light truck, medium, heavy duty truck, and OTR tires. Accu-Fit CMT, Accu-Fit II/Innerlope® Inside, Hand Built Inside, Industrial and OTR envelopes are used in allsystems of pre-cure retreading.

TIRE SIZE	MODULE TYPE SEALS SIDEWALL TO SIDEWALL	ROAD RIM TYPE SEALS WITH REMOVABLE FLANGES W/VALVE	ROAD RIM TYPE SEALS WITH EXTENDED HI-FLANGE W/VALVE	RIMLESS SYSTEM SEALS ON THE FACE OF BEAD W/VALVE
11R22.5, 11R22.5DL	4223-28	4223-28	4223-28	4215-35
12R22.5	4422-30	4422-30	4420-31	4416-36
12.75R22.5	4422-30	4422-30	4420-31	4416-36
15R22.5	4423-30	4421-30	4419-34	4413-39
16.5R22.5	4522-34	4520-36	4520-36	4513-44
18R22.5	4522-34	4518-38	4515-41	4513-44
235/80R22.5	3822-23	3822-23	3822-23	3816-28
245/75R22.5	3521-19	3521-19	3519-21	3818-26
255/70R22.5	3822-23	3822-23	3822-23	3816-28
265/70R22.5	3822-22	3822-22	3820-24	3814-29
265/75R22.5	3822-23	3822-23	3820-25	3814-30
275/70R22.5	3822-23	3822-23	3820-25	3814-30
275/80R22.5	4022-25	4222-26	4020-26	4214-32
295/75R22.5	4224-24	4222-26	4220-28	4214-32
295/80R22.5	4223-28	4223-28	4221-29	4215-35
305/70R22.5	4224-24	4222-26	4220-28	4217-34
305/70R22.5	4224-24	4220-28	4220-28	4217-34
305/85R22.5	4422-30	4422-30	4420-31	4416-36
315/80R22.5	4422-30	4422-30	4420-31	4416-36
365/80R22.5	4522-33	4518-37	4518-37	58 X 12
385/65R22.5	4423-30	4421-32	4421-32	4415-38
385/75R22.5	4522-33	4518-37	4518-37	58 X 12
425/65R22.5	4423-30	4520-36	4520-36	4515-41
445/50R22.5	4423-30	4421-32	4419-34	4415-38
445/65R22.5	4522-34	4518-38	4518-38	4814-44
11.00R24	4423-30	4421-32	4421-32	4415-38
12.00R24	4522-34	4522-34	4520-36	4515-41
13.00R24	55.5 X 17	55.5 X 17	55.5 X 17	55.5 X 14
14.00R24	55.5 X 17	55.5 X 17	55.5 X 17	63 X 13
11R24.5, 11R24.5DL	4422-30	4422-30	4422-30	4418-34
12R24.5	4422-30	4422-30	4422-30	4416-36
275/80R24.5	4224-24	4222-26	4220-28	4217-34
285/75R24.5	4224-24	4222-26	4220-28	4217-34
295/80R24.5	4422-30	4422-30	4422-30	4418-34
305/75R24.5	4422-30	4422-30	4422-30	4418-34

CMT Envelope Dimensions

42=42" outside diameter (O.D.) of the envelope hole
 17=17" outside diameter (O.D.) of the envelope hole
 34= Double the measurement from the outside diameter of the hole to the outside diameter of the envelope.
 2 X 17"=34" bead to bead (B to B)



RETREADING // ENVELOPES



Insist on the Original!

➔ Envelope Tester, Envelope Storage Cart

B & J ENVELOPE TESTER

- Extremely Fast ▪ Detects the smallest leaks ▪ Positive operation
- Easy to install ▪ Simple to use
- **No maintenance required!**



649-83340

EXTREMELY FAST

DETECTS THE SMALLEST LEAKS

ENVELOPE STORAGE CART

- Organize and store envelopes conveniently
- Mobile, can be moved around the shop wherever needed ▪ Sturdy and easy to maneuver ▪ Color-coded handle grips available to organize envelopes by size ▪ Easy assembly ▪ **CART HEIGHT: 39.75" ▪ BASE DIAMETER: 47.83" ▪ LOAD CAPACITY: 1,000 lb.**



The Envelope Storage Cart in use.

EASILY STORES ENVELOPES

PORTABLE & EASY TO MOVE



649-40100

ASCOT NO.	MFG. NO.	DESCRIPTION
649-83340	833400	B & J Envelope Tester

ASCOT NO.	MFG. NO.	DESCRIPTION
649-40100	840100	Envelope Storage Cart

RETREADING // ENVELOPES

➔ Retread Related Products from Other Product Categories

Looking for related items you may need to get the job done?

TIRE BUFFERS



PAGE 69

158-10873

REGROOVER & ACCESSORIES



PAGE 190

455-00406 455-12500

455-00003

GLOVES & SAFETY SUPPLIES



PAGE 482

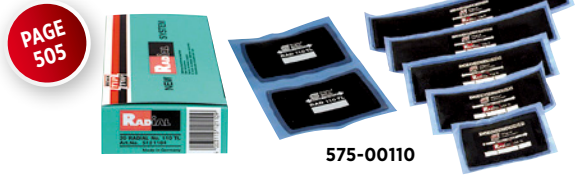
PAGE 487

396-51450

396-61050

396-10011

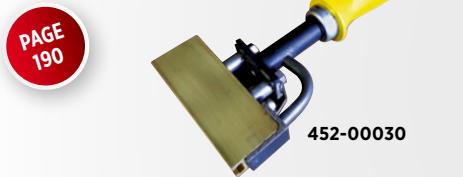
TIRE REPAIR MATERIALS



PAGE 505

575-00110

TIRE BRANDERS



PAGE 190

452-00030

CARBIDE ABRASIVES



PAGE 542

538-11200

538-10700

538-12200

CARBIDE CUTTING TOOLS



PAGE 550

533-00003
533-00010
533-00012
533-00045
533-01120
533-01140
533-01141
533-01180
533-01181
533-01381
533-01516
533-01716

BUFFING STONES



PAGE 550

534-80015

534-80115

534-80001

534-80036

534-80136

534-80037

534-80137

SURE SHOT SPRAYER



PAGE 186

632-02400

TIRE SPREADERS & REPAIR STATIONS



PAGE 556

603-03000



PAGE 558

603-00275

RETREADING // RETREAD RELATED ITEMS